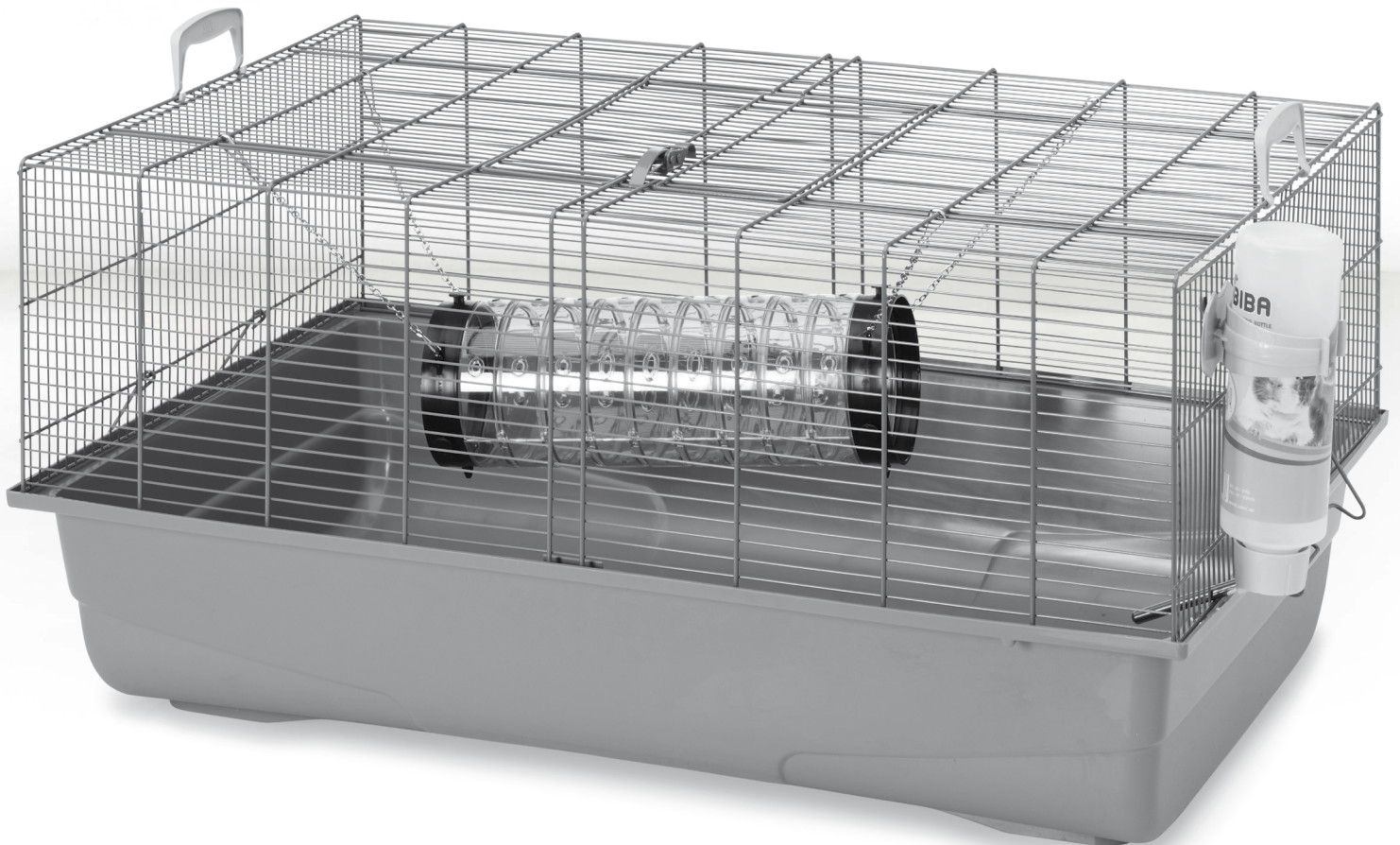


Ruffy 2

assembly instructions

SAVIC[®]

pets' favourite

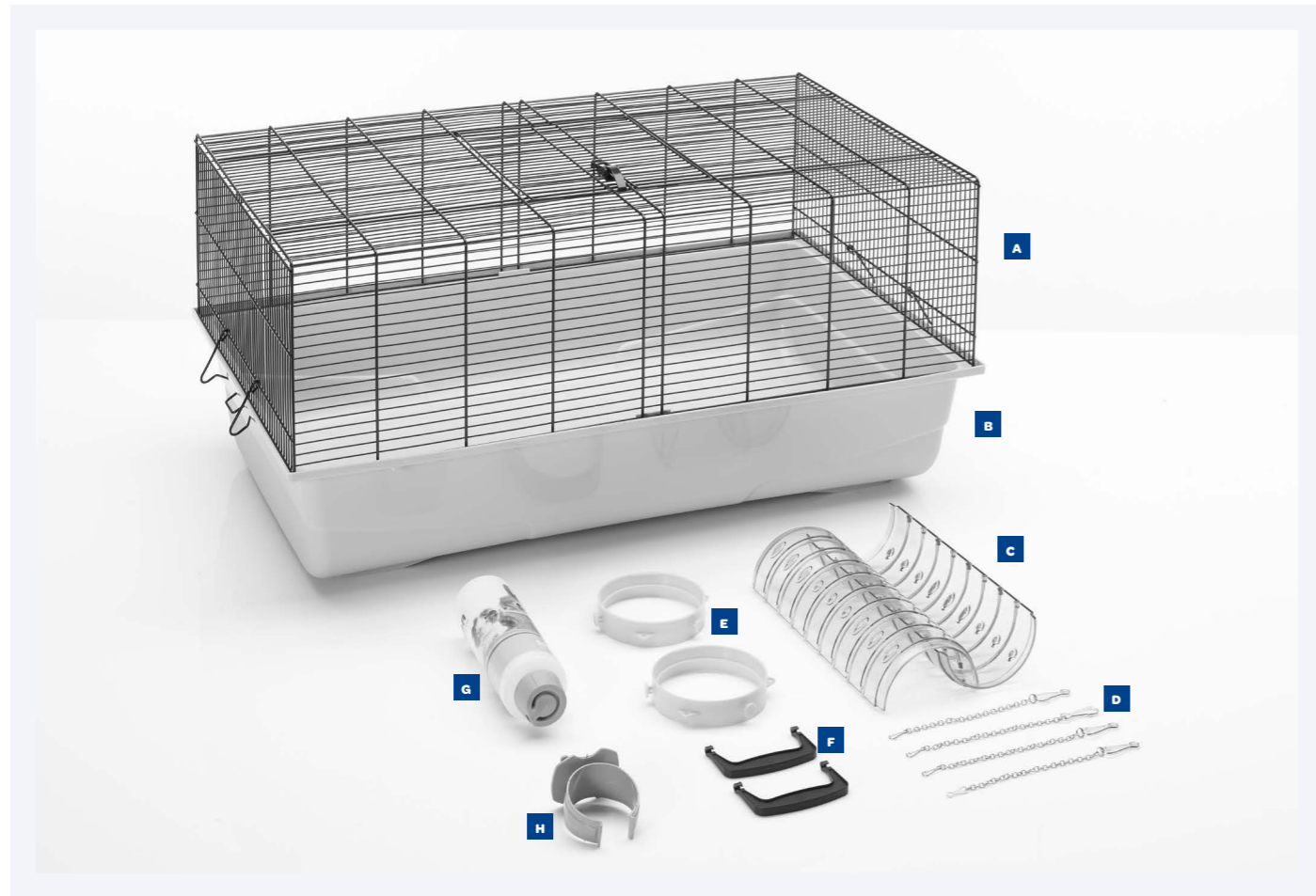


Follow us on  

[#petslovesavic](#)

Check list

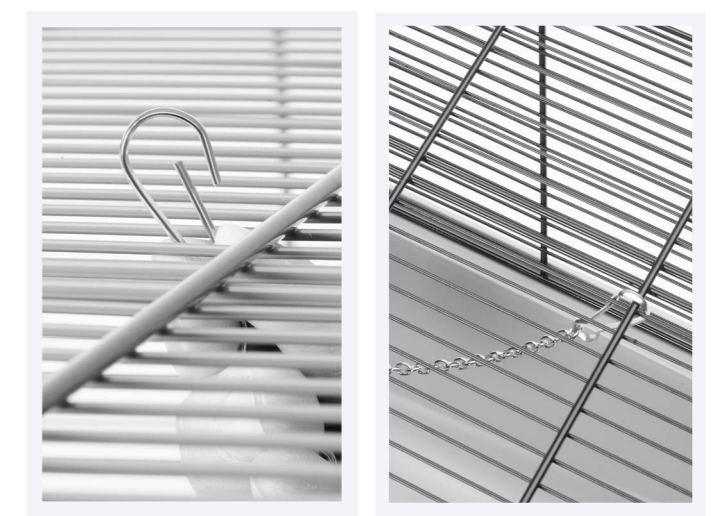
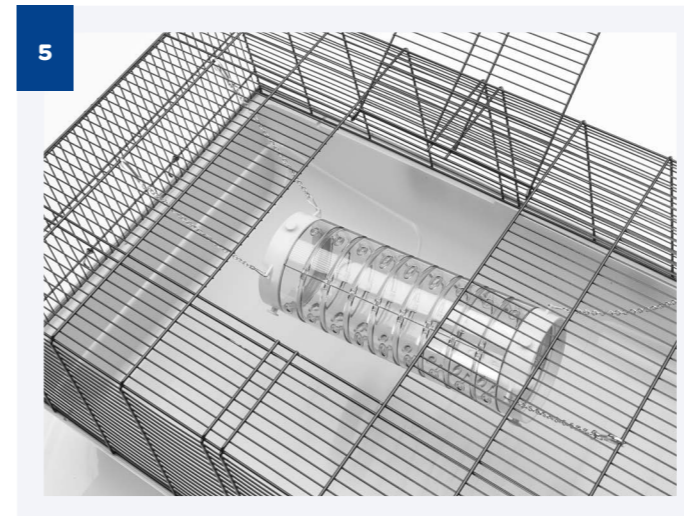
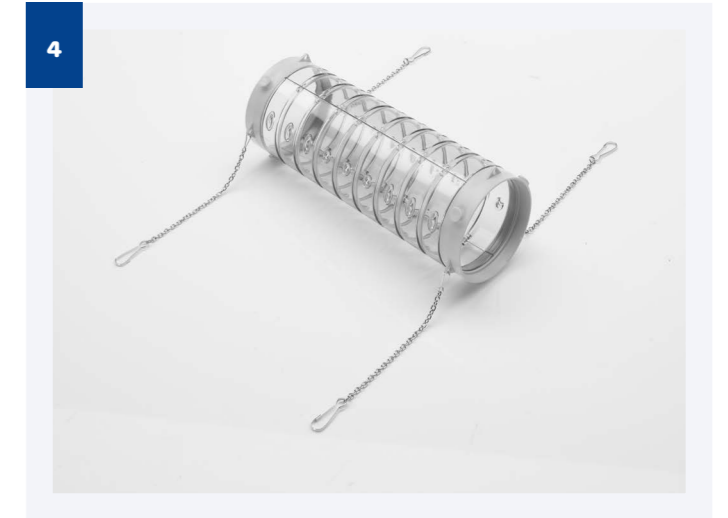
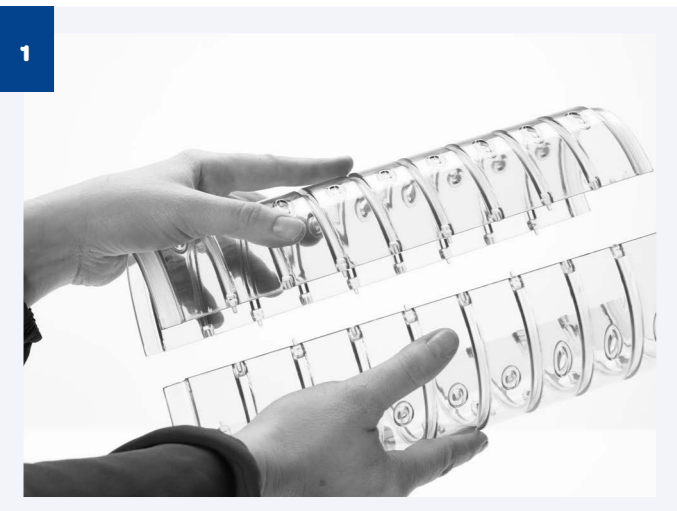
Before you start assembling your cage, please check if you have all the components. If any part is missing or damaged, do not use your cage.



- A** 1 metal wire cage
- B** 1 plastic bottom tray
- C** 2 tube parts

- D** 4 chains
- E** 2 rings
- F** 2 handles

- G** 1 drinking bottle
- H** 1 holder



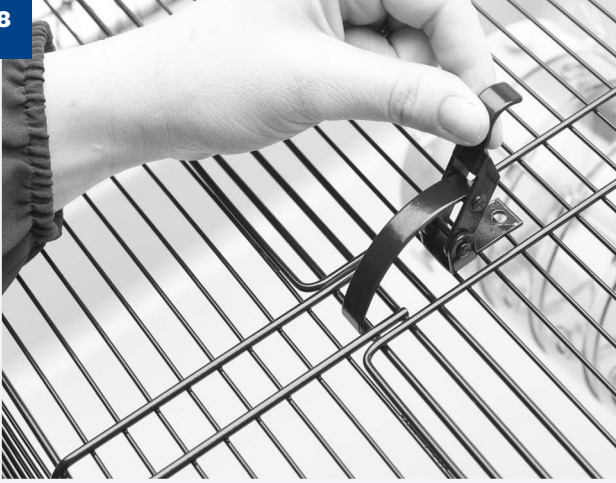
1

2

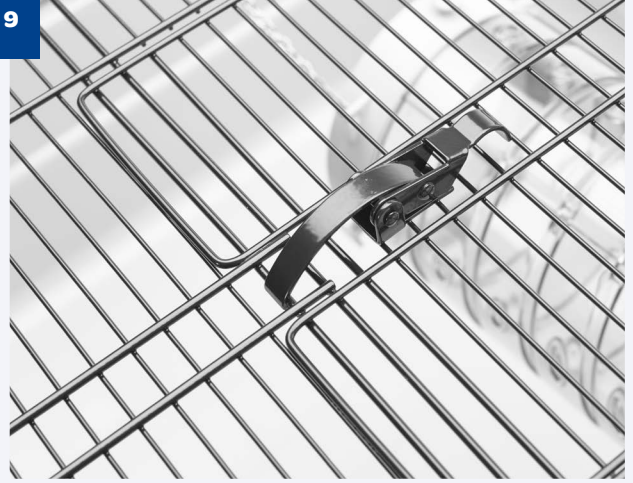
6

7

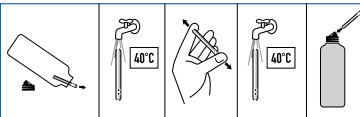
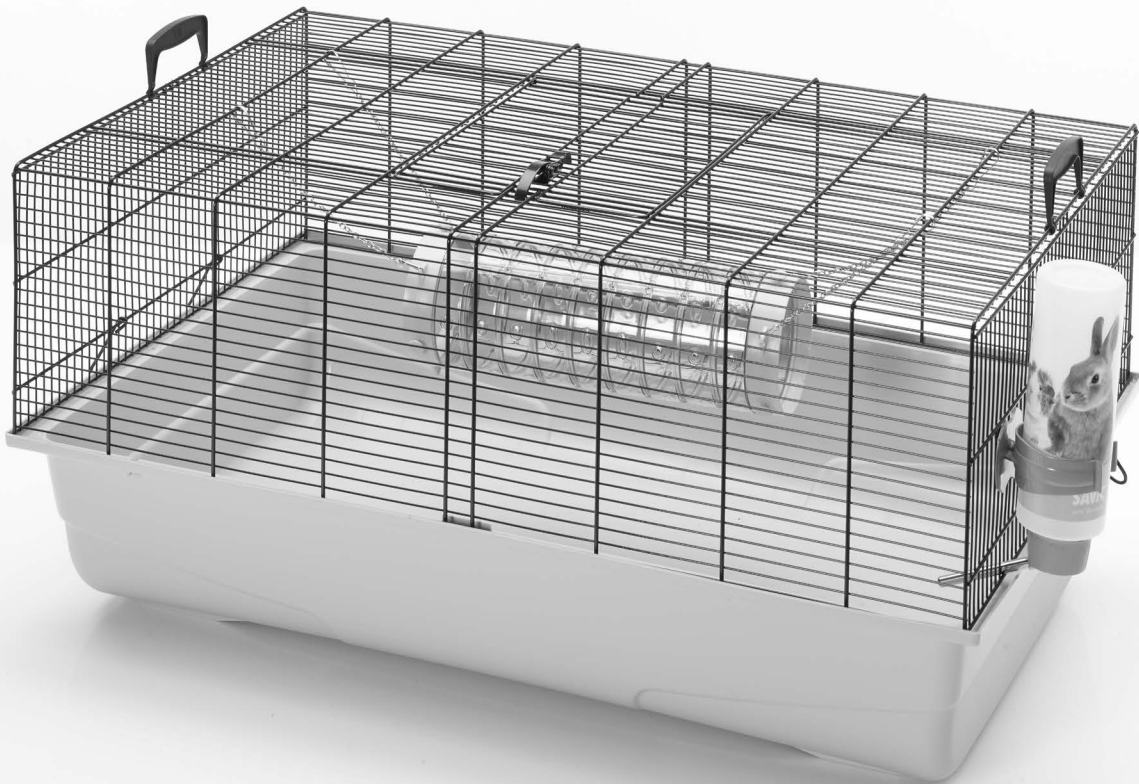
8



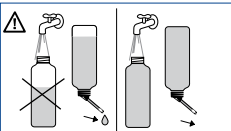
9



10



Rince spout with hot water before first use.
 Voor eerste gebruik, buisje reinigen met warm water.
 Avant premier usage, rincer la pipette à l'eau chaude.
 Vor erster Verwendung, Röhrchen spülen mit heissem Wasser.
 Antes de usarlo, limpiar el tubito con agua caliente.



ATTENTION
 To avoid leakage, always fill bottle 100%.
 Om lekken te vermijden, vul de fles altijd 100%.
 Afin d'éviter des fuites, toujours remplir la bouteille 100%.
 Um Tropfen zu vermeiden, Tränke immer 100% füllen.
 Para evitar gotas, siempre llenar la botella 100%.

www.savic.be
 Ringlaan 10 • B-8501 Heule • Belgium
 Tel. +32 56 35 33 45 • Fax +32 56 35 77 30
 info@savic.be
 Doc.nr.: 931445

SAVIC[®]
 pets' favourite