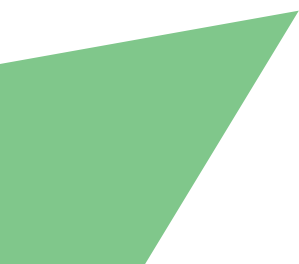
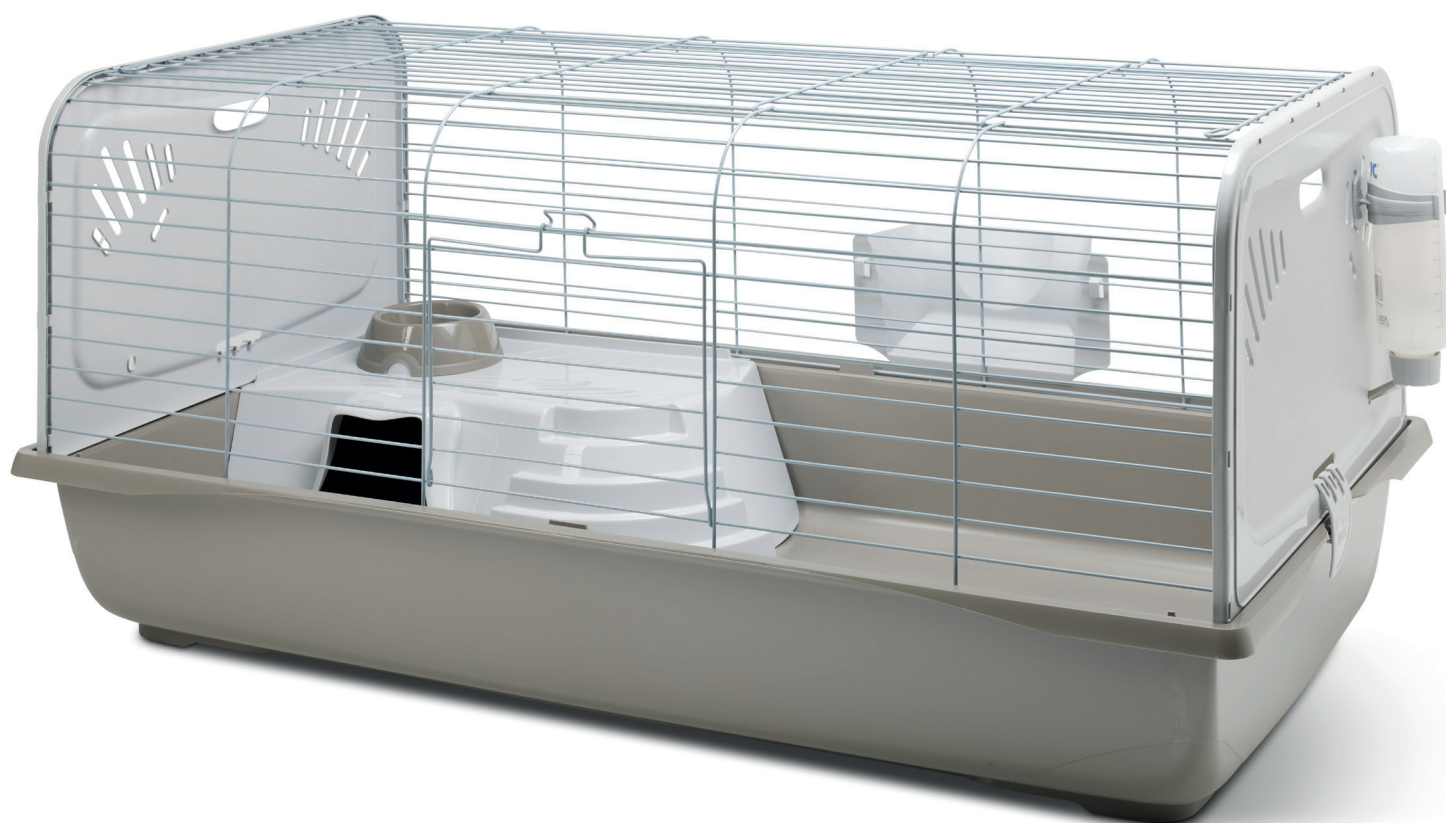
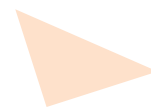


Caesar 4 Knock Down

assembly instructions

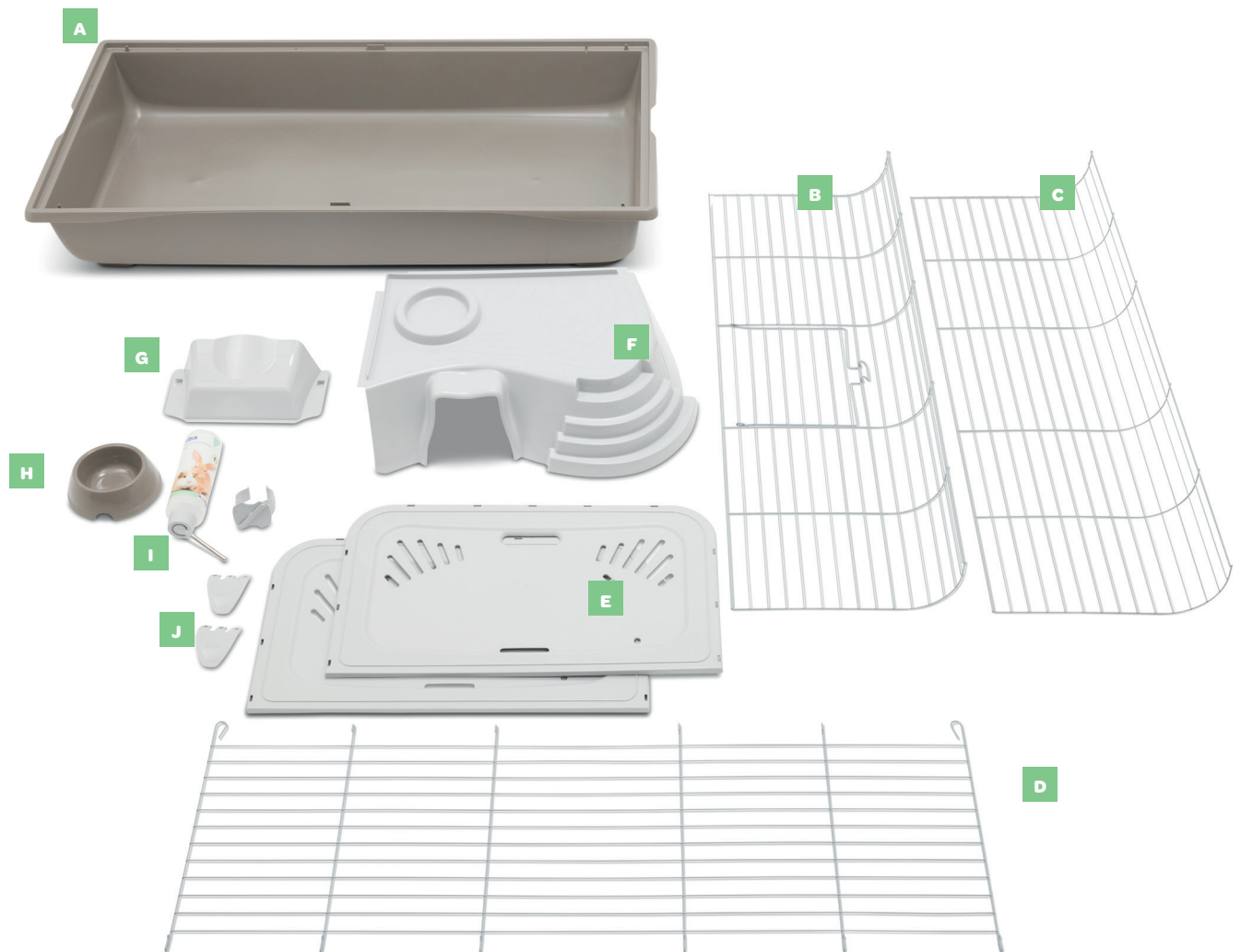
SAVIC[®]
pets' favourite



Check list

Before you start assembling your cage, please check if you have all the components.

If any part is missing or damaged, do not use your cage.



- A** 1 cage bottom (T010239)
- B** 1 front panel with door (WKV5221)
- C** 1 back panel (WKA5221)
- D** 1 roof panel (WKB5221)
- E** 2 side walls (T010407)
- F** 1 cage platform (T010238)
- G** 1 hay rack (T020169)
- H** 1 feeding bowl (T020230)
- I** 1 water bottle + holder (A0163 + T010261)
- J** 2 closing clips (T010254)

1A



click

1B



click

Click the front panel with door and the back panel into 1 of the 2 side walls. Make sure it's well attached.

2A

click

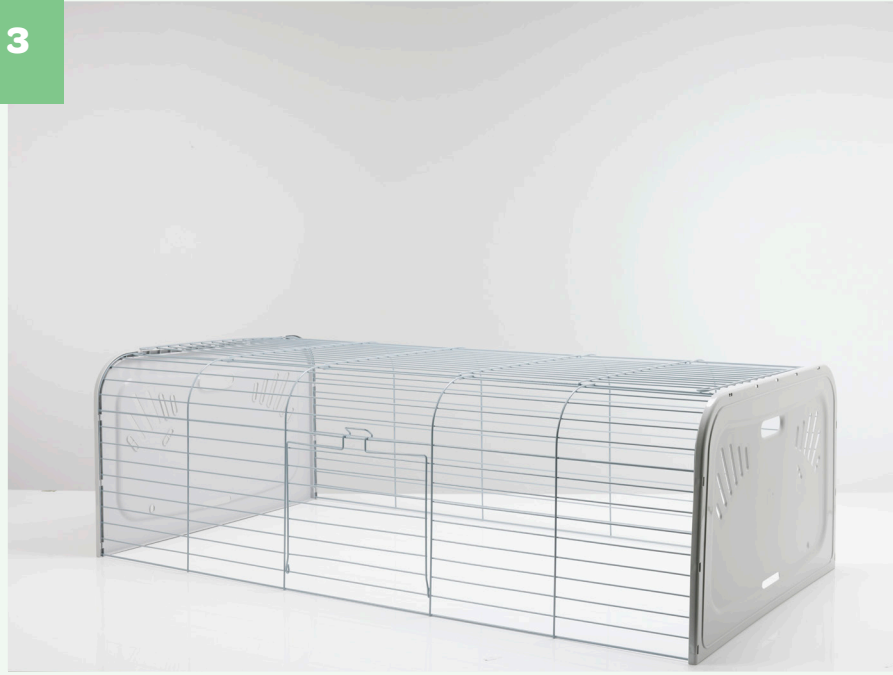


2B



Click the remaining side wall to the front and back panel.

3



Install the roof panel by pulling the hooks over the first wire of the back panel. Then close the roof panel by securing the hooks over the first wire of the front panel.

3A



3B



3C



4



Fit the platform in the corner with small openings. The pins of the platform will fit perfectly. Place the feeding bowl on the round protrusion of the platform.

4A



4B



4C



5



Attach the hay rack to the back panel and attach the bottle holder.

5A

turn



5B



5C



6



Attach the 2 closing clips to the side walls. Make sure they clip well over the side walls and the edge of the bottom.

Your cage is now ready for use.

6A



6B



6C



	<p>ATTENTION To avoid leakage, always fill the bottle 100% and completely insert the metal spout into the plastic lid.</p>
	<p>Rinse spout with hot water before first use.</p>

www.savic.be
Ringlaan 10 • B-8501 Heule • Belgium
Tel. +32 56 35 33 45 • Fax +32 56 35 77 30
info@savic.be
doc.nr. 931257

